

SHARETEC Q3 2023

NEWSLETTER

EMPLOYEE UPDATES



QUARTERLY SPOTLIGHT - *KATHLEEN*

Kathleen is our amazing Administrative Assistant and loves the fast-paced environment and her positive coworkers at Sharetec! She is also a bass player and poetry writer. Kathleen enjoys organizing and hosting Jazzetry events in Fort Wayne (a fusion of live jazz and poetry readings). Cheers to Kathleen!

NEW ADDITIONS TO SHARETEC

We're constantly growing and added some amazing new talent to the Sharetec family this past quarter, including:

Keith Perry

VP of Professional Services

Katie Lange

Sr. Account Relationship Manager

Ashley LaBombard

Marketing Associate

Amelia Ackerman

HR Coordinator

ICYMI

CUNA STRATEGIC SERVICES ALLIES WITH SHARETEC

This collaboration aspires to provide more credit unions access to Sharetec's powerful web-based core and advanced functionality!

[READ MORE](#)

FOND DU LAC CU CONVERTS TO SHARETEC

Upon extensive research and conversion, the Wisconsin credit union chose to convert to Sharetec's innovative core processing software!

[READ MORE](#)

HOW A 360-MEMBER VIEW BENEFITS CREDIT UNIONS

Discover how a 360-member view can enhance member satisfaction!

[READ MORE](#)

IMPROVE YOUR CU'S COLLECTIONS PROCESS

Modernize & streamline your collections process with Rocket Collector!

[READ MORE](#)

Q3 “SHARETECIVERSARIES”



A big cheers to all the Sharetec customers celebrating an anniversary with us in Q3:

JULY

- Fortress FCU
- Vigo County FCU
- Bloomington Municipal CU
- McMurrey Federal Credit Union
- Los Alamos Schools Credit Union

AUGUST

- Lennox ECU
- Harvard Community Credit Union
- Lakewood Credit Union

SEPTEMBER

- North Iowa Community CU
- Riverside Community Credit Union
- Peoria Bell Credit Union
- Peoria City Employees CU
- Youngstown City Schools CU
- Kerr County Federal Credit Union

ANNOUNCEMENT

LEVERAGE and MCA Partner with Sharetec to Provide Cutting-Edge Technology to CU's



Sharetec, an innovative leader in core processing for credit unions, has announced its new partnership with Members Core Alliance (MCA), an organization that provides credit unions in Georgia, Florida, and Alabama with a streamlined, outsourced core data processor. After an extensive core search, MCA chose Sharetec as its new partner due to Sharetec's cutting-edge technology and solid cultural fit.

Sharetec, an innovative leader in core processing for credit unions, has announced its new partnership with LEVERAGE and Members Core Alliance (MCA). LEVERAGE, the Service Corporation for the League of Southeastern Credit Unions & Affiliates, is the business services provider that leverages credit union system resources, relationships, and industry knowledge for optimal performance and sustained growth of its clients and business partners. MCA is a credit union service organization (CUSO) that provides credit unions in GA, FL & AL with a solid, reliable, and user-friendly core processing platform.

After an extensive core search, MCA chose Sharetec as its new partner due to Sharetec's cutting-edge technology and solid cultural fit. "We're thrilled to embark on this transformative journey with Sharetec. Our vision has always been to empower credit unions with the best technology and support available," said Kyle Fowler, Vice President of MCA. "With Sharetec as our partner, we are confident in our ability to provide our credit unions with state-of-the-art core processing capabilities."

Discussions between LEVERAGE, MCA, and Sharetec began in September 2022 at the annual Sharetec Users Conference in Nashville, TN. This conversation sparked a ten-month journey that included countless joint meetings and system and feature demonstrations. To ensure that Sharetec would be the ideal choice for MCA credit unions, Sharetec held an on-site visit experience for MCA clients and leaders at AIM CU in Iowa. The technology provider also worked with MCA on co-branded partnership negotiations that would be a winning situation for all credit unions involved.

Steffi Decker, CEO of Sharetec, expressed enthusiasm about the partnership, stating, "Sharetec is excited to engage in cohesive sales efforts with MCA and LEVERAGE to provide Sharetec's powerful web-based core and caring culture to MCA credit unions. We look forward to witnessing the resulting growth and member satisfaction that is sure to follow."

Sharetec prides itself on its bold technology and persistent efforts to be a caring partner. That is why, in July 2023, MCA and LEVERAGE chose Sharetec. This partnership marks the beginning of an exciting new era for MCA and its member credit unions, one where MCA can offer cutting-edge technology, enhanced back-office collaboration, custom reports, and optimized workflows, all aimed at driving growth and success. MCA is eager to start the core conversion process, which essentially represents a relaunch of their services, now with a new partner and a new system.

Lindsey Cole, Chief Operating Officer of LEVERAGE, emphasized the shared commitment between the organizations, stating, "Our organizations are committed to our nation's credit unions and are focused on promoting growth and success for all credit unions that join us in our endeavors, now and in the future." For more information about MCA and how your credit union can get back to focusing on what matters most – great member service – visit MembersCoreAlliance.com.

FEATURED PRODUCTS

SHARETEC VELOCITY:



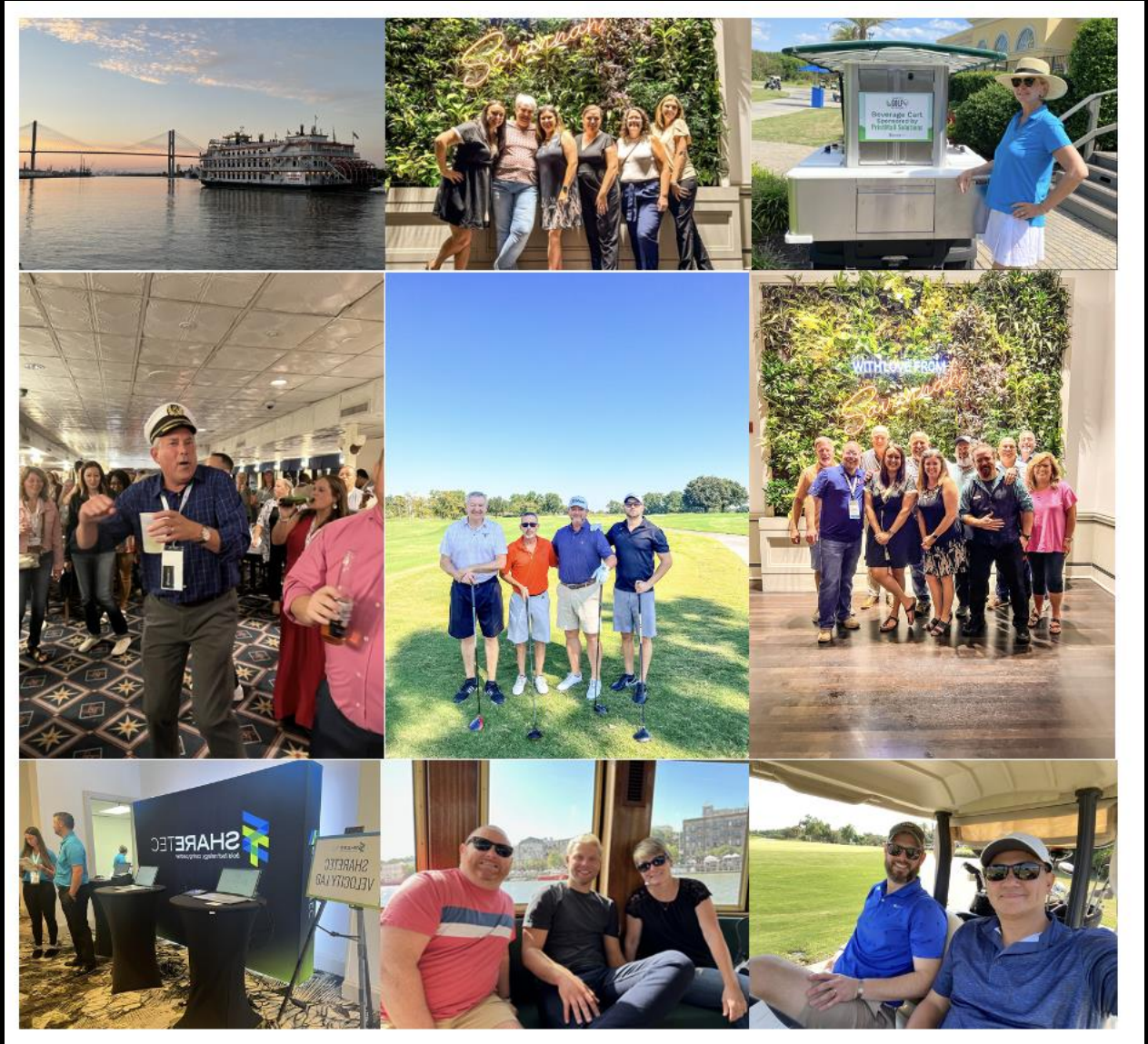
WATCH NOW

PLAID/OMS 2.0 WEBINAR:



WATCH NOW

THANK YOU for an Amazing Users Conference!



We had a fantastic 2023 Users Conference, thanks to our staff, business partners, and partnering credit unions! Thank you, and we hope to see you again next year in Texas!

2024 SHARETEC USERS CONFERENCE

[REGISTER For 2024!](#)

Next year's Users Conference will take place September 8 – 11, 2024 in Frisco, Texas!